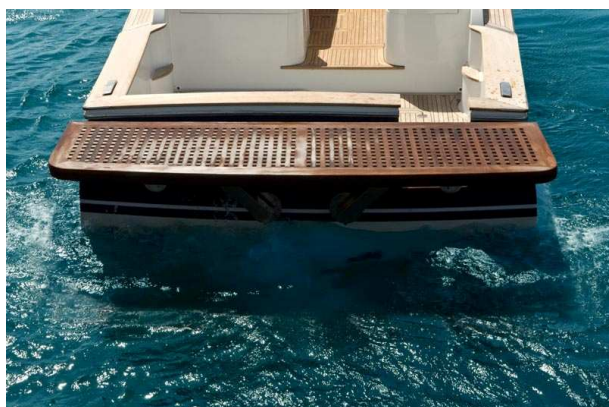




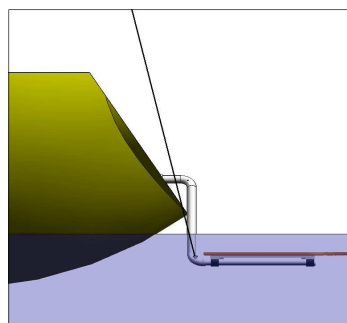
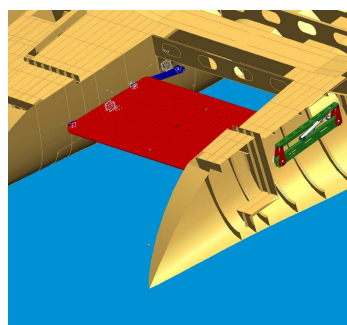
Original Water Lift

STERN LIFT PLATFORM

PATENTED



- The kinematics is placed into the hull.
- No holes under the water line.
- No submerged parts during navigation.
- Stainless steel made, polished or coated.
- Hydraulic system
- Three positions stops:
Down - under the water line
- Medium - during navigation
- Up - sun suit and safe navigation.
- Available in several different measures and lifting power. Tailor made.
- Available for catamarans, with four arms, and manual operated for sailing yachts.



TECHNICAL DATA - standard type	
Platform size	3250x1100 mm
Lifting power	500 Kg
Stroke/speed	From 500mm under water to 1000mm over total stroke 1500mm/30sec
Power	1,5 Kw 12V DC on hidraulic operation 150A take off / 80A rating
Electric plant	12V DC with manual drive and remote control
Weight	250 Kg. (trampoline not included)

RB *uno* Srl

47900 RIMINI - Via EMILIA 35 d/e
Tel. +39 0541 742977 Fax +39 0541 742997
e.mail info@rbuno.it - web www.rbuno.it

Our service is our experience